

The Lamp

Hello everyone.

I hope everybody had a wonderful holiday season and are now staying warm. It is hard to believe we are more than half way through this ESA year but here we are already.

I hope all of our chapters are focusing on the “Power of Us” campaign and sending in your stories and pictures to IC. Remember we are doing a state wide Easter Seal event on April 13, 2024 at Back 9 golf in Indianapolis. It will take a lot of volunteers so please sign up when Alley gets the information out. Don’t forget that the Easter Seal donation deadline is March 31, 2024 and the deadline for all other donations is May 15, 2024 to be counted for this year.

Beta Phi is working on State Convention and will have information at Spring Conference. The new casino in Terre Haute will be open and there are many restaurants and bars close to the convention center, so plan on coming Friday evening and just have a fun relaxing evening.

I hope to see a lot of you at Spring Conference on March 9, 2024 in Zionsville at the Town Hall, please get your registrations in on time. See you all in the spring!!

Love and Kindness,
Cindy



SPREAD KINDNESS LIKE

Wildflowers

ESA 2023-2024

Inside this issue

Officer Reports..... 1—11

Chapter Reports.....12—21

Pictures.....22 - 23

Special points of interest

Chapter News.....12-21

Pictures..... . 22-23

News and Flyers.....24-29

Financial Reports from
2023 State Convention and
Fall Conference.....30-31



Kary Soto, First Vice-President

I was able to attend the annual leadership conference in Denver this year and learned so many great things to aid in growing our membership. I can't wait to share these ideas with you at Spring conference.

I am still looking for an Easterseals Coordinator for my board next year if anyone would like to volunteer. I am also still looking for a chapter to host spring conference next year.

Thanks,
Kary Soto

2nd Vice-President, Jennifer Morris

Hello!!

We are well past the midway part of another sorority year. I can't wait to see all the hours, mileage and donated goods that you have done this year on your philanthropic reports. It won't be long now before my mailbox or my inbox is filling up with reports.

I look forward to seeing you all at Spring Conference. Especially those chapter members who I have not seen at a state meeting in a while. Remember to bring your items for Outreach Indiana to Spring Conference. I will have information about a Camp Riley wish list and a t-shirt order at Spring Conference.

I did not receive any State Project recommendations. We will not need to vote on a State Project at State Convention.

Anna's Celebration of Life Foundation has the following upcoming events:

- * Indy's St. Patrick's Day Parade, Friday March 15 in downtown Indianapolis – we are welcome to walk in the parade with the foundation. Please let me know if you are interested in walking in the parade. By March 5th.
- * Have you heard about the solar eclipse occurring on April 8th? Anna's Celebration of Life is having Anna's Eclipse Celebration at the NK Hurst Building (230 W McCarty St, Indianapolis, IN 46225) on Monday, April 8, 2024. The event will be from 1:00pm – 5:00pm. The foundation is looking for volunteers to have total engagement with kids, help with activities, and be ambassadors for families that attend. The foundation is aiming for 250 attendees (that includes children and their families). This is a wonderful opportunity for the members of ESA to interact with special needs children and their families. Please contact me if you are interested in volunteering at this event.
- * Pulling for Kids Sporting Clay Shoot, Saturday, June 8 at the Indiana Gun Club in

* Anna's 18-hole Challenge Thursday, August 15 at the Country Club of Indianapolis

* 12th Annual Rock the Night for Special Needs, December 7, 2024 at The Atrium. The theme this year will be Prince's Purple Rain album. We better start looking for our raspberry beret's!

The opportunity to send a gift to the families of children who are waiting for their ACOLF life enhancing gift to arrive is still available. Please contact me at jbshmorris@gmail.com if you individually or your chapter is interested in participating in this project.

Looking to the future please let me know if you are interested in serving on the elections committee, the nominating committee or the chapter counseling committee for the 2024-2025 sorority year.

With much ESA love and kindness,

Jennifer Morris
jbshmorris@gmail.com
317-223-9716

Treasurer, Jenn Balkema



Recording Secretary—Amanda Zhaorsky



Parliamentarian, Vivian Greeson

Hope everyone is keeping warm and trying to stay dry from all the rain. Spring is only a couple months away. The days are already starting to get longer.

I did not receive any By-Law changes from the state, so there will not be any By-Law changes at State Convention.

Hope everyone is making plans for Spring Conference.

"Kindness begins with the understanding that we all struggle"

Educational Director/ ISC Easterseals Project Chair Alley Gary

Facebook Raffle Basket

Big shout out to all the members that donated to the first fundraiser basket

Raised over \$400, all helping to go towards the deposit for our 1st Annual Golf Outing

Gamma Pi has donated the remaining donation needed to cover the deposit and the contract will be signed by Spring Conference

Spring Conference Ways & Means Table

- Silent Auction 3-piece painting (24in x60in) painted by a person with a disability, starting bid starting at \$50



- Egg Shaped Coasters (6in x4in) \$3 each or 2 for \$5, handmade by Roseann
- Blind Wine Pull \$7 a bottle
- 1st Annual Golf Outing Benefiting Easterseals Crossroads
 - * NEED Golfers, Sponsorships, & Donations for silent auction, or prizes
 - * DO NOT need volunteers
 - * ALL Proceeds go towards the Bench for the New Sensory Garden at Easterseals Crossroads



Must meet the \$5,000 contractual donation by June 30th of each year

Corresponding Secretary, Elaine Chaney





Awards Chair, Mary Brewer

Greetings Indiana ESA members!

As we approach the spring semester of the chapter year, I would like to take this opportunity to remind everyone about their Pallas Athene points.

KEY POINT: ESA Headquarters is the record keeper of the points.

The local chapter / awards chair sends points updates to ESA Headquarters. The individual member can request the total pallas athena points on record. To date, there is no automated by chapter or by state report generating mechanism. Here is an excerpt from the ESA Site:

ESA Headquarters maintains records for First Pearl and Pallas Athene programs. Submit updated affidavits to ESA HQ in any of these formats:

- * mail hardcopy affidavits to ESA HQ: ESA Headquarters, 2580 E Harmony Road Suite 301-11, Fort Collins, CO 80528
- * submit updated points as part of quarterly roster corrections (through your chapter treasurer)
 - email: esainfo@epsilonsigmaalpha.org -- email from chapter awards chair or president with affidavit attachment or member's name, member number and point total (Individual members may self-submit and ESA HQ will serve to certify)

NOTE: ESA Headquarters needs only the total cumulative points for any individual. When sending in points via email, roster or paper affidavit, please be sure to have the cumulative point total clearly stated so we can ensure proper updates. Points must be reported each time a member reaches a new award level, do not send multiple levels at once. Headquarters requests points be submitted for recording yearly.

For more information or to check out the awards templates, please use this link:

<https://www.epsilonsigmaalpha.org/awards>

See you at Spring Conference!

Mary Brewer

Association of the Arts, Cyndi Murphy



Chaplain, Maddie Kerr

Hello, my fellow Indiana ESA members!

Here we are in the thick of winter. I don't know about you, but the weather, the past holidays, and the pressure of a New Year's resolution have worn on me. It is so easy to get down on ourselves; however, that is not what is healthiest for anyone.

To spread kindness to others, we must also be kind to ourselves. This kindness could look like self-care such as journaling, reading, going on a walk, spending time with good friends, taking a relaxing bath, or singing and dancing like no one is watching. Self-care also involves making healthy choices around food, sleep, mental and physical activity, as well as nurturing social and spiritual connections.

A constant reminder in any service profession is, "You can't pour from an empty cup." It is a challenge to give when you are drained. The phrase reminds us to take time for ourselves and that it is okay and healthy to do so. Filling our cups looks different for everyone. To determine what fills your emotional cup, you might have to try a few of the ideas above. For me, it's painting my nails, using a face mask, and going on a walk (when the weather is nice).

As we enter spring and continue to spread kindness like wildflowers, practice being kind yourself.

ESA Love and Mine,
Maddie Kerr



Collegiate Coordinator, Monica Haddock



ESA Foundation Counselor, Jenni Russ

Greetings! I want to thank all the chapters and individuals who have renewed their Foundation membership. Additionally, I wish to thank those who have donated to the ESA Foundation by making a contribution and those chapters who have used the Turn-Around Fund.

As you begin considering your chapter giving for the end of the ESA year, I encourage you to make a gift to the ESA Foundation and to use the Turnaround Fund for your contributions to other charitable 501(c)3 organizations. You can donate to up to 10 qualifying charities using just one check! If you have any questions about how to fill out the form, please contact me. You'll want to plan ahead by allowing at least 4 weeks for the checks to be returned to you so you may present them or mail them to the selected charities.

Did you know that when you make a donation to the ESA Foundation you aren't required to designate the fund it will be directed to? I absolutely encourage you to contribute to the Indiana ESA Endowment/Judy and Morton Lester Endowment Fund, particularly as the market losses have prevented that scholarship from being awarded in 2022 or 2023. However, I want to make sure you know about the importance of contributing to unrestricted or general funds. To operate, the Foundation has many expenses including the application website, a portion of the ESA Member Suite expenses, and shared payroll expenses for ESA Headquarters staff. While I know you or your chapter may have a particular affinity for the scholarship funds, I encourage you to consider giving an unrestricted gift to help the Foundation continue to operate successfully. Think "both/and", not "either/or".

ESA Foundation Counselor, Jenni Russ, continued

A great way to support the ESAF General Fund while honoring someone special is by purchasing a virtual brick as part of the ESAF Pathways Program. Please see the included full-page flyer in this issue for more information. This is a nice way to honor your outgoing chapter president, or a chapter member who has reached a special milestone or honor. It is also a great way to honor community members and family members who aren't a part of ESA or the Foundation.

As always, if you have any questions, please reach out to me. I love hearing from you!



Lamp Editor, Brenda Campbell

There's one more issue of the Lamp to go. Lets fill it up with great events, stories and pictures!!!

Brenda

MARC Reps, Sherrie Sutton and Mary Clark



Senior St. Jude Coordinator, Laura Campbell
Junior St. Jude Coordinator, Megan Gray

I hope everyone has been having a great 2024 so far! The Eta Pi golf outing raised this **\$20,889.89** for St. Jude this year! Walk/Run totals will be finalized in February so I hope to share those numbers soon! Registration for IC challenge is also open for 2024. If you are planning to go to IC, it is a great opportunity to raise money for St. Jude and have a lot of fun!

The Power of Us campaign is still ongoing and it ends on May 31st. If anyone has questions feel free to reach out to me.

ESA is also holding a virtual enrichment event on March 28th. For more information, reach out to me or go to epsilonsigmaalpha.org/Events

If anyone has ideas or recommendations for St. Jude events, please let Megan or I know, we would love to hear them!

I hope everyone continues to have a great 2024 and I will see you at Spring Conference!



EasterSeals Coordinator, Makayla Greeson

Hope you all are doing well. Hope you are all loving this weather. I hope you all are thinking of ideas and fundraisers and hosting events for the state project.

I know of one chapter that is doing a project for Easter seals. Also if you have questions about the Easter seals project please contact Alley, she is in charge of that.

I am just doing Easter seals on the board.

Thanks Makayla



Webmaster, Courtney Ginder

Hello, Indiana ESA!

I hope you all have stayed warm and cozy this winter! I know I'm looking forward to hearing more about everything that you all have in store for your spring fundraisers and events! Please remember to send them to me to post on the state website and our social media channels – I see quite a bit of your pictures and events while I'm scrolling, but I don't see everything. I would love to share all the great things that Indiana ESA does and help gather interest in your events, but I can't do that if I don't know about them.

Please let me know if there is anything you'd like to see on the state website or social media! I love hearing from all of you!



" I WOULD RATHER MAKE MISTAKES
IN KINDNESS AND COMPASSION
THAN WORK MIRACLES IN
UNKINDNESS AND HARDNESS.

– MOTHER TERESA

Jr. Past President, Jennifer Skinner

What is the Disaster Fund?

The purpose is to assist members whose home and/or personal belongings are destroyed or damaged extensively by one of nature's causes (fire, flood, etc.). Also, when a member incurs heavy financial responsibility due to a debilitating illness or accident.

How does the Disaster Fund work?

Members can access an application form on the ESA International website. These get returned to the ESA International Council Disaster Fund Chair. Make sure the application form is completed according to the guidelines and signed by the member.

Who is eligible?

Active members of 90 days or more.

Members-at-Large, who are in good standing.

Life Active members.

House payments, hotel bills, etc.

**Member of the Year forms
are now available
on the state website!**

A collection of various objects including pushpins, paper clips, googly eyes, a tag, and paper cutouts of a dog and a cat. The objects are scattered on a white background. There are two red pushpins, one blue pushpin, and one green paper clip. There are also several googly eyes with different colored pupils (red, yellow, blue, green, black). A white tag with a hole is also present. Finally, there are three paper cutouts of a dog and one of a cat in different colors (brown, yellow, blue).

Greetings from Gamma Pi Indianapolis!

Gamma Pi has once again had a busy start to the new sorority year and fall!

Several members attended many social events during the fall at Dollie's Farm sunflower festival and Pleasant View Apple Orchard. Rita Chapman, social chairman, has found us great events to go to and things to do as group outings for the year! November several members went and painted pottery at UPaint Pottery and in December we will be attending Elf at the Historic Artcraft Theatre in Franklin and the Indiana Historical Society Festival of Trees Twilight Tuesdays to view the specially decorated trees after dark. Also in December we will be having our chapter Christmas Party at Napoli Villa in Beech Grove.

Several members attended the Fall Conference in September and brought back the ongoings in the state to the chapter. We are starting the very early stages of planning state convention 2026, when our own Jennifer Morris, will preside as state president! MARC conference in Peoria, gathered ESA members from several states together. Gamma Pi was represented with four members!

Of course, Gamma Pi works also! We had another highly successful mum sale for Ways and Means, Scentsy scent circles for the Disaster Fund, our annual Hope For Heroes collection drive is currently going on. Chapter members are getting ready to volunteer for Anna's Celebration Rock The Night event, Damar Christmas Shopping and wrapping and Christmas Families from Little Flower and Johnson County United Way during the holiday season. In addition to supporting other area chapters events! Our 41st Reverse Raffle for Camp Riley is right around the corner on February 24 and our Purse Bingo for Anna's Celebration of Life is on May 1!

Gamma Pi had a very successful Fall Rush campaign led by Vice President Brandy Small! We have had two new members join ESA/Gamma Pi. Mother and Daughter, Donna Weigle (mom) and Nancy Hartwell (daughter), were pledged in November and sponsored by Brandy. We potentially have one other new member joining ESA!

Gamma Pi
New Year!



members wish all a Happy Holidays and Happy
We will see you next year!!

Fall Conference
Gamma Pi attendees

Eta Pi, Fishers

Happy spring, Indiana ESA!

We hope that you had a warm and cozy winter season! We stayed busy the last several months; we are back serving meals at Ronald McDonald House, sorting shoes at Changing Footprints, and enjoying each other's company at the Carmel Christkindlmarkt and other socials! We are also so thrilled that we raised \$20,889.89 at our annual Golf Outing benefiting St. Jude Children's Research Hospital, and that we donated \$1,002.50 in goods to HVAF of Indiana during our annual Winter Warm-Up Campaign. We also pledged our newest member, Kathy, at our holiday chapter in December!

We are looking forward to our spring fundraising events, like our annual Eggs for Easterseals fundraiser. We are selling plastic eggs stuffed with candy and trinkets (the good stuff!) and all proceeds will benefit Easterseals Crossroads. Eggs are 12 for \$15, 24 for \$25, 48 for \$40, and 96 for \$50! Contact any Eta Pi member or our Philanthropic Chair Morgan Nichols by March 15 if you'd like to have us do the work of stuffing Easter eggs for you! Stay tuned for more information about an upcoming mystery dinner benefiting Anna's Celebration of Life Foundation in April as well.

We can't wait to see you all at Spring Conference where we'll be among the wildflowers! We would love for you to bring donations for Outreach Indiana, a nonprofit that helps equip and empower Indiana youth facing homelessness. Their current needs are travel size toiletries (shampoo, conditioner, deodorant, & body wash), laundry detergent pods, toothbrushes and toothpaste, and bottled water.

See you at Spring Conference!



Chi Omicron, Avon

ESA Chi Omicron News Letter

September 2023

We had the St Jude Walk on a beautiful day. After the walk we went to brunch at “The Garage Foo Hall”.

October 2023



We had 4 new members pledge Monica Cripe, Suzy Walton, Pamela Rohlman, and Laura Sanders at a wonderful meeting hosted by Jaycee in her beautiful home. Two Members were celebrated for their 5-year pledge anniversary, Melissa Peak and Maddie Kerr.

There was a wonderful Charcuterie board and so many tasty sweets.



Chi Omicron, Avon, cont'd

We attended Mooresville Street fair where we sold caramel apples with a variety of toppings for Camp Riley and handed out candy to kids. It was a bit cold but we had a wonderful time.



We had a wonderful day at Beasleys orchard for our Family Social. There was pumpkin picking, hayrides, delicious fall treats and so much more.



November 2023

Friendsgiving from around the world was celebrated at Serena William's house. The countries included Caribbean, Turkey, Netherlands, Italy, Greece, Vietnam, Cuba, Ireland, Mexico, China, Spain, and Germany. We ended the evening with a fun game of What country is this found in!



December 2023



Christmas was celebrated at a fun Greek restaurant Opa. We had Cheese that was on fire as well as some great meals. The evening ended with a sock exchange where everyone was able to select a gift to open of fun and fluffy socks. It was a wonderful evening filled with stories and laughing.



Mark Your calendars!!!



Beta Kappa, Seymour

Happy Almost Spring from Beta Kappa!!

We hope everyone survived the freezing temperatures and are looking forward to spring flowers, Easter and taking this ESA year out with a bang.

Beta Kappa is staying the course with our tried and true fundraisers. Our July golf scramble was a record breaker for Camp Riley. Our new little Oktoberfest princess, Abigail Wiese, did a tremendous job raising money for St. Jude, Anna's, Easterseals and all of our other local endeavors. And we had a great Arts and Craft Market with record vendors. Girls Inc was packed with some fabulous items and some great food.

Hope to see many of you at an upcoming state meeting.

Beth White and Beta Kappa Sisters



Gamma Pi, Indianapolis

Hello Indiana ESA! We are thinking of spring and looking forward to warmer weather and sun! Just a few more weeks according to the groundhogs.

Gamma Pi, like usual, has been busy since the last issue of the LAMP and we are gearing up for a busy spring! No rest for the wicked!

Thank you to our social committee, lead by Rita Chapman, we have had several fun and educational socials! In January we visited the Indiana Medical History Museum. This museum showcases the beginnings of scientific psychiatry and modern medicine, they did early research on cadavers of individuals that were patients at the Central State Hospital (Central State was a hospital for patients with mental and physical disabilities) The building is the oldest pathology facility in the nation! Lots of history! We followed up with lunch at The Working Man's friend, another Indianapolis staple! Visiting both were firsts for several members! In December we had 2 Christmas parties for the chapter! We visited Napoli Villa in Beech Grove for a wonderful Italian dinner and had a secret sister gift exchange with sweet treats and snacks after one meeting. February, several members visited Mallow Run Winery and enjoyed soup, wine and music!

Our philanthropic chairs, Peggy Clegg and Elaine Chaney, always keep us busy with a wide variety of projects. Many members also volunteer for a wide variety of organizations around the Indianapolis and Central Indiana area. In December, we sponsored 2 families from Little Flower Catholic Church and donated to Johnson County United Way Angel Tree store. These 2 organizations have been a staple of Gamma Pi for the last several years. As of this writing, we are gearing up for our 41st annual Reverse Raffle/Spaghetti Dinner for Camp Riley! Hard to believe we have been doing it for 41 years and it seems to grow a little bit every year! We are also in the beginning stages planning of our annual Purse Bingo for Anna's Celebration! Several of our members are also on the committee for the 1st Annual Easter Seals Back9 Golf Outing! This is going to be a fun event! You will hear more about it at the Spring Conference and through emails!

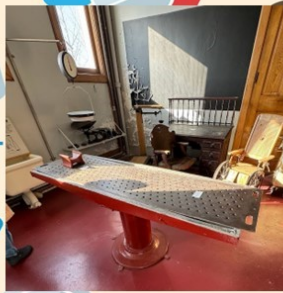
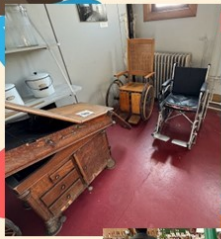
Gamma Pi has also started the very early workings for the 2026 state convention! Rozanne Robertson and Karen Urrutia have lined up a hotel and date. More details to come later!

We are currently looking for a new meeting spot! The Benedict Conference Center where we have meet for several years (close or over 30 years...) and have had a state leadership and probably a fall or spring conference there, will be closing their facility and tearing the building down to build a new home for the nuns. We are sad to see this wonderful facility closed. Changes are coming for Gamma Pi!

Have a great end to winter and the beginning of spring and Gamma Pi will see you soon!

Gamma Pi, Indianapolis, continued

Gamma Pi, Indianapolis members toured the Indiana Medical History Museum On the grounds of the former Central State Hospital. This museum showcases the beginnings of scientific psychiatry and modern medicine, they did early research on cadavers of individuals that were patients at the Central State Hospital (Central State was a hospital for patients with mental and physical disabilities) The building is the oldest pathology facility in the nation! Lots of history! We followed up with lunch at The Working Man's friend, another Indianapolis staple!



Happy Holidays and Happy New Year to all of Gamma Pi's friends and family in Facebook land! Recently several members gathered at Napoli Villa in Beech Grove, IN for dinner and fellowship!



This Photo by Unknown Author is licensed under CC BY

Delta Delta, Seymour

Delta Delta, Seymour will "Make Someone Smile" this year under President Amy Steitz's leadership. Other officers are Vice President Samantha Collier, Secretary Stacey Brummett, and Treasurer Kara Abraham.

Using Amy's theme for our educational programs, Jan Engel started the year introducing us to her dentist and sharing Mary Anne Schneider's volunteer experience with Cloud of Witness Ranch: Equine Assisted Services.

Over the summer, the chapter partnered with Beta Kappa chapter on the Nick Personett Memorial Golf Scramble for Camp Riley and participated in the Relay For Life of Columbus. A few members also helped with the Jackson County United Way's annual school supply distribution "Rock'n Ready."

This past fall, the chapter raised money through our annual mum sales. We collected items to mail to local active service people and cut out, counted and sent hundreds of dollars of coupons for Hope for Heroes. Unfortunately, we were unable to secure a gaming license for the \$999 Oktoberfest raffle and missed raising money through it. Several members helped other nonprofit groups instead. In November, we hosted a craft day for ways and means and Anna's Celebration of Life and have another craft day on February 24.

This winter, the chapter had a social at a local Mexican restaurant, helped Stuff a Truck for the ARC of Jackson County, and helped place wreaths at the local Wreaths Across America event.

The chapter is proud of Susan Waltz for serving as PIP Chairman and on the state philanthropic committee.



Saturday, March 2
10:30 am to 4 pm

Seymour Library Meeting Room
\$5/bag sale 2-4 pm

An advertisement for Gale e-learning courses. It features a woman wearing glasses and a scarf, looking at a laptop. The text "LEARN SOMETHING NEW" is prominently displayed in large, white, bold letters on a blue background. Below this, it says "Nearly 375 personal & professional development courses are free with your library card." To the right, the word "COURSES" is written in a blue box. At the bottom, a blue banner contains the text "Find your next free class at education.gale.com/l-evergreenin/". The Jackson County Public Library logo is in the top right corner.

Delta Delta, Seymour, continued



Golf Outing



Mums



Rock n' Ready



Relay for Life



Stuff A Truck



Social



Wreaths Across America



Eta Pi serving a meal at Ronald McDonald House

Volunteering at Changing Footprints



Eta Pi Holiday meeting





Induction of new member,
Kathy Menser

Fun holiday outing!



2023

Golf Outing Total

\$20,889.89



*Donated to St. Jude
Children's Research
Hospital*



EPSILON SIGMA ALPHA: ETA PI PRESENTS

Eggs for Easterseals

12 Eggs: \$15	48 Eggs: \$40
24 Eggs: \$25	96 Eggs: \$50

Please indicate any allergies upon ordering.
Eggs will be filled with a mixture of candy & trinkets.

Orders due by March 15, 2024!

*All proceeds benefit
Easterseals Crossroads*

Eta Pi

 **easterseals**
taking on disability together



WISH LIST

Swim Underwear/Depends

Youth Size Life Vests

Paint/Acrylic Paint

Bug Spray

Canvases (for painting on)

Ball Air Pumps

Masking Tape

Chalk

Bubbles

Window Markers

Ziploc/Resealable Bags

Sports Equipment – basketballs,
kickballs, volleyball, etc.

Streamers (to decorate cabins)

Beach Towels

Construction Paper

Batteries (AA & AAA)

Friendship Bracelet String

Storage Bins

Tarps

Pool Noodles/Toys

Air Dry Clay

BENEFITING



**Riley
Children's
Foundation**

If you have any questions, please contact:
Melissa Sexton, Riley Children's Foundation
msexton@rileykids.org 317-759-6946



1ST ANNUAL INDIANA EPSILON SIGMA ALHPA

GOLF OUTING

Benefiting Easterseals Crossroads

SATURDAY

April 13, 2024

BACK 9 GOLF & ENTERTAINMENT

1415 Drover Street Indianapolis, IN

Registration: 11 am - 12 pm

Golf: 12 pm - 2 pm

Registration: \$80

**Includes golf, lunch,
& 2 drinks**

**Sponsorship
opportunities available!**

**All proceeds support Indiana
Epsilon Sigma Alpha's
fundraising efforts for the
new sensory garden at
Easterseals Crossroads!**





PLEASE BRING DONATIONS FOR

Outreach Indiana

TO SPRING CONFERENCE 2024

Outreach Indiana equips and empowers youth facing homelessness to achieve stability and life transformation.

LIST OF NEEDS

- Travel-size toiletries: shampoo, conditioner, deodorant, & body wash
- Laundry detergent pods
- Toothbrushes and toothpaste
- Bottled water

Scan for
greatest
needs



Scan for
Amazon
Wish List

2023 State Convention Financial Report Form

Email * brendacampbell040@gmail.com

Chapter Name, City, and Number Eta Pi, Fishers, 5556

What year did you host State Convention? 2023

State Convention Dates June 9-10

List your total number of full registrations, the full registration cost, and the final total (Number of registrations X cost = Total) 49 Adult @\$150 = \$7,350 + 1 Y @ \$120 =\$120; Total = \$7,470.00

List your total number of guests, the guest registration cost, and the final total (Number of Guest Registrations x Cost = Total) 28 @ \$70.00 = \$1,960.00

List your total number of partial registrations, the partial registration cost, and the final total (Number of Partial Registrations x Cost = Total) 18 (various amounts) = \$410.00

List any other income that you have. \$0.00

List your total convention income. \$9,840.00

List your total expenses from the Friday Night Mixer. \$150.00

List your total expenses from the Saturday morning breakfast. \$0.00

List your total expenses from the Saturday lunch. \$1,650.00

List your total expenses from the Saturday dinner. \$3,575.00

List your total expenses from the Sunday breakfast. \$290.00

List any printing expenses. \$0.00

List any expenses for favors. \$0.00

List any building/hotel rental expenses. \$3,801.49

List any entertainment expenses. \$0.00

List your total expenses. \$9,466.49

Total Income Value \$9,840.00

Total Expenses Value \$9,466.49

Net Profit Value \$373.51

Half to Host Chapter Value \$176.76

Half to Indiana State Council Value \$176.75

Submitted by Brenda J. Campbell

Chapter President Jennifer Skinner

Fall Conference Financial Report Form

Email *chaplainbj@aol.com

Chapter Name, City, and Number * Delta Zeta Terre Haute #3618 Beta Phi Rockville #3212

What Conference and year did you host? * Fall Conference 2023

List your total number of registrations and your registration fee. * 47 @ \$25 each

List your total income from registration. * \$1,175.00

Tootal number of ways & means tables and ways & means table fee. * 9 tables. \$3 each

List your total income from ways & means tables. * \$27.00

List any expenses from serving breakfast. * -0-

List any lunch expenses. * -0-

List any printing expenses. * -0-

List any building rental expenses. * -0-

List any refunds that had to be provided. * -0-

List any other expenses. * -0-

List your total expenses. * -0-

Total Income Value * \$1,233 (includes sales)

Total Expenses Value * -0-

Net Profit Value * \$1,233.00

Half to Host Chapter Value * \$308.25 each Delta Zeta and Beta Phi)

Half to Indiana State Council Value * \$646.50. (includes \$30 donation to State)

Date of Conference *09/16/2023

Submitted By: Chapter Presidents * BJ Voll (Delta Zeta) and Mary Clark (Beta Phi)

LAMP DUE DATES

April 15, 2024

Please submit all upcoming event information, articles and pictures, with captions, via email or mail to:

Brenda Campbell

1446 Capstone Drive

Greenfield, IN 46140

brendacampbell040@gmail.com

2023-2024 LAMP PUBLICATION HARD COPY REQUEST

Per Indiana ESA By-Laws, the quarterly Lamp publication will be transmitted electronically to the email listed on the official chapter roster that was submitted to the Indiana State Board.

If you do not have email, please ask that a fellow chapter member print a copy for you. If the above cannot be provided to you, a hard copy can be mailed to your current address by completing the following information, and sending it to me.

I, _____, an active member of the

_____ Chapter of Epsilon Sigma Alpha, hereby request a hard copy of the quarterly Lamp publication to be mailed to me at:

Name: _____

Address: _____

City, State, Zip Code; _____

The above member recognizes that it is their responsibility to supply a correct and valid US mail address to ensure they receive a hard copy. They also understand that this request will need to be filed annually.

Any changes to their contact information should be sent to the State Board and the Lamp editor to ensure receipt of the Lamp publication.

Signature: _____

Date: _____

PLEASE RETURN TO:

Brenda Campbell
1446 Capstone Drive
Greenfield, IN 46140
Brendacampbell040@gmail.com

ESA- Indiana

Good Friends...

Good Works...

Good times

Kind hearts are the gardens,
Kind words are the roots,
Kind thoughts are the flowers,
Kind deeds are the fruits.

Take care of your garden
And keep out the weeds;
Fill it with sunshine,
Kind words and kind deeds.

-H.W. Longfellow



ESA- Indiana

Brenda Campbell

Lamp Editor

Phone: (812) 592-2149

E-mail: brendacampbell040@gmail.com

ESA member
123 Sunnyside Lane
Kindness, IN 55555



EPSILON SIGMA ALPHA