



INDIANA STATE COUNCIL NEWSLETTER
VOLUME 80, ISSUE 2 DECEMBER 2024

The LAMP



MAY YOUR HOLIDAY SEASON SPARKLE & SHINE !

President - Kary Soto



Hello!

It has been a wonderful year so far. I have loved seeing all the amazing things ESA-Indiana has been accomplishing.

The Future of ESA meetings have been a huge success. I appreciate everyone that has participated and the wonderful ideas that are being discussed. Everyone is invited to participate in these meetings. They will be held the third Tuesday of each month by zoom. I will post the link in the Indiana ESA Facebook group and if you want to get a direct email or text just let me know.

I can't wait to see everyone at Spring Conference in March!

SPARKLE & SHINE !!

Kary Soto
President

DECEMBER TOPICS:

News from your State Board	1
Chapter News	11
Fall Conference Financial	16
Purse Bingo Financial	17
Spring Conference	18
ACOLF News	19
Contact Information	20
Dates to Remember	Last Page





First Vice President Jennifer Morris



Hello Indiana ESA members!

Nomination forms, bids for State Meetings and State Officer interest forms are all due to me by January 1, 2025 – just a few weeks from now. Please visit www.indianaesa.org, go to the more tab, chapter and council management forms to complete the State Officer Nomination, the State Meetings bids, and the office interest forms. The forms are submitted through Google Forms links on the website.

I am happy to answer any questions you have about offices or hosting a state smeeeting. Thank you to those members who have already completed and submitted the forms. I was happy to attend Chi Omicron's meeting in November. Chi Omicron welcomed several new members to their chapter.

Maddie Kerr and I took a road trip in November to visit with the Phi Alpha Chapter at Ball State University. It was a pleasure to meet the Phi Alpha Chapter members. I have included a few links from ESA Headquarters to help with membership recruitments. October was recruitment month but new members are welcomed at any time.

The "JUST ONE MORE IN 2024" campaign has a few weeks left. With just one more in 2024 Indiana could finish 2024 with positive membership numbers.

www.facebook.com/groups/ESAMembershipIdeas

www.epsilonsigmaalpha.org/Recruitment

www.epsilonsigmaalpha.org/Publicity



The Omega Chi Chapter has decided to disband the chapter. Pat Dodson has several pieces of ceremony items that she would love to have a chapter put to good use. If you think your chapter might have a use for ceremony pieces, please contact me and I will get you in contact with Pat Dodson.

Feel free to contact me at jbshmorris@gmail.com or 317-223-9716 with any questions you have. Continue to Sparkle and Shine in ESA!

-Jennifer Morris

Second Vice President Pam Vogel



Hello, again, everyone! It's hard to believe the Indiana year is half over. I have enjoyed serving as your 2nd Vice President and philanthropic chair this year. I am very passionate about community service, and it has been very fulfilling for me. If you would like more information about my position or are thinking of running for this office in the future, please contact me. I would be happy to help answer any questions.

Anna's Celebration of Life Foundation will be holding their Rock the Night for Special Needs fundraising event on Saturday, December 7 at the Atrium in Indianapolis. ESA members serve as volunteers for this event every year. If you are interested in volunteering this year, a direct link is available on our state website's home page or you can contact me directly at esapamv@yahoo.com or text 812-371-2719 and I will get you signed up to volunteer.

Please be on the lookout for a survey that I will be sending to chapters concerning possible future capital projects for Camp Riley. As I mentioned at fall conference in September, I have been working with Mel at Riley Children's Foundation and she has identified areas at Camp Riley where Indiana ESA could commit to another project.

I would like to narrow the list to projects everyone would be interested in possibly committing to in the future. Once I have received everyone's input, we can discuss future projects at spring conference in Indianapolis in March.

If you have any questions for me, please feel free to contact me any time. Have a safe and happy holiday season.

-Pam Vogel

Junior Past President Cindy Norman



Hello everyone!! I hope you all have had a wonderful fall and are gearing up for the holidays.

Please remember all the homeless veterans this holiday season and winter and maybe do a project to support them for Hope for Heroes.

I hope you are watching all your chapter members for a "Member of the Year" candidate for State Convention. Big shout out to Brandy Small and everyone involved with the Purse Bingo for Easterseals. There was an amazing turnout and it was a really fun evening!!

Merry Christmas and Happy New Year to each and every one of you.

-Cindy Norman

**Treasurer
Jennyfer Balkema**



Don't forget -

*BOTH ISC and IC Dues must be postmarked by December 31st, 2024. The form for IC dues as well as the form for ISC dues are on the Indiana ESA website. Have a happy holiday season!

"May your holidays sparkle with love, laughter and goodwill!" - Unknown

ESA Love and mine - Jenn Balkema



**Webmaster
Courtney Ginder**



Happy Holidays, Indiana ESA!

The website is up-to-date and chugging along! Please send me your events so that I can share them on social media and the website. We are up to 359 followers on Facebook and 181 followers on Instagram, and our largest reach is just over 1200 people!

Thank you to all of you who like, comment, and share our content, we're reaching so many people who support our events, donate to our fundraisers, and may even want to join us!

If you have any questions about the website or have suggestions on content to share, don't hesitate to reach out to me at cbginder@gmail.com!

ESA Love- Courtney Ginder



Collegiate Coordinator Maddie Kerr

Hello everyone!

I hope you and yours had a great Thanksgiving!

The semester is wrapping up at Ball State and Phi Alpha had a great semester. They are having year-round recruitment so new members can join any time of year.

Some highlights of their Fall Semester are:

1. They gained one new member during Fall Rush!
2. They worked together to donate a raffle basket for our State Project benefitting Easterseals.
3. They volunteered in the Muncie community cleaning up the White River, hosted a St. Jude walk on campus, and wrote cards for Veterans.
4. They spent time together and shared the value of association by visiting Jacobs Family Orchard.
5. They partnered with Lambda Chi Alpha to participate in Trunk or Treat.



If you know anyone who would like to be a part of an awesome group of ladies, they can reach out to esaphialpha@bsu.edu or text @bsuesa to 81010.

If you have Instagram, you can follow what the ladies are doing throughout the academic year by following [esa_phialpha](https://www.instagram.com/esa_phialpha)

I wish you all a Merry Christmas and Happy New Year

- Maddie Kerr



Chaplain Elaine Chaney

ESA Family,

We are entering a part of the year that brings new beginnings. My sparkling wish for you is to practice self-care, as it is the foundation of self love. When we love ourselves we can better love others. Take time to reflect, relax, and refresh yourself everyday. Our emotional well-being is birthed in a consciousness that we must balance the three parts of our being: Body, Mind and Spirit. Remember, when you encounter too much stress, it causes distress and it is a clear signal that you need to de-stress. Please also remember, that as an ESA member you are never alone.

- Elaine Chaney

Scrapbook Chair Jaclyn Thomas



I have been slowly wrapping up Cindy's scrapbook due to ongoing health issues. A huge thanks to Mary Brewer and Elaine Chaney for helping me work on it! I have yet to receive very many photos for Kary's scrapbook. Please send them to me with what event and charity the photos are for and what the date is for that event to: jstomas.jt@gmail.com. I need photos from:

- IC Convention in Kansas
- Fall Conference
- MARC Conference
- Any events your chapter has participated in!

Thank you!,

-Jaclyn Thomas

Email Blast Update

The ISC Board is dedicated to promptly updating all its members but prefers communication through the ISC ESA Lamp Editor email address. Time-sensitive notices are dispatched on the 1st and 15th of every month. For any communications intended for the entire membership, kindly use the ESA Lamp Editor email address iscsalamp@gmail.com.



Lamp Editor Mary Brewer



Greetings Indiana ESA!

First, I want to wish everyone and their families, the very best of the holiday season!

I appreciate the LAMP articles and BLAST content submitted so far this year. It is a joy to get to review all the happenings across our busy state!

It is my goal that others stay connected as we have many communication channels available (see the box below). If anyone has a suggestion to improve communication or needs help submitting information to share with the membership, please reach out to any ISC board member, your chapter president, or your LAMP Editor.

-Mary Brewer

STAY CONNECTED

INDIANA ESA WEBSITE:

[HTTP://WWW.INDIANAESA.ORG/](http://www.indianaesa.org/)

ESA INTERNATIONAL (IC) WEBSITE:

[HTTPS://WWW.EPSILONSIGMAALPHA.ORG](https://www.epsilonsigmaalpha.org)

FACEBOOK:

INDIANA EPSILON SIGMA ALPHA



MARC Representatives

Susan Waltz



Vivian Greeson



Here is a recap from the 2024 MARC conference from Susan

- I attended the 2024 MARC conference in St. Louis, Missouri on Oct. 11-12, 2024.
- Pam Vogel and I joined 14 other Indiana ESA members for the fun.
- Alley Gary proposed a balanced budget for 2025-2026 that was approved.
- Amanda Dixon from Ohio was installed at MARC President.
- Some of the bylaw changes passed but not all of them so watch for updates of these bylaw changes in the future.
- There were some good speakers and entertainment, like Marcy Bursac who spoke on fostering to adopt. I was able to get a copy of two of her books with one being a children's book.
- Some of our Indiana members will be serving on MARC committees for the coming MARC year:
 - Brenda Campbell – MARC Audit chair
 - Brandy Small and I – MARC Budget Committee
 - Jan Rahn – MARC Nomination Committee
 - Elaine Chaney and Alley Gary – MARC Ways and Means Committee.
- Mark your calendars for the 2025 Conference which will be held on October 10-11, 2025 in Brookfield, Wisconsin.



ESA for St Jude Coordinators

Megan Gray



Hello, Indiana ESA!

The St. Jude Memphis Marathon is just days away, and I'm looking forward to seeing some familiar faces strolling down Beale Street! Did you know that the funds raised for the St. Jude Memphis Marathon can count toward your IC Challenge \$200 fundraising goal?

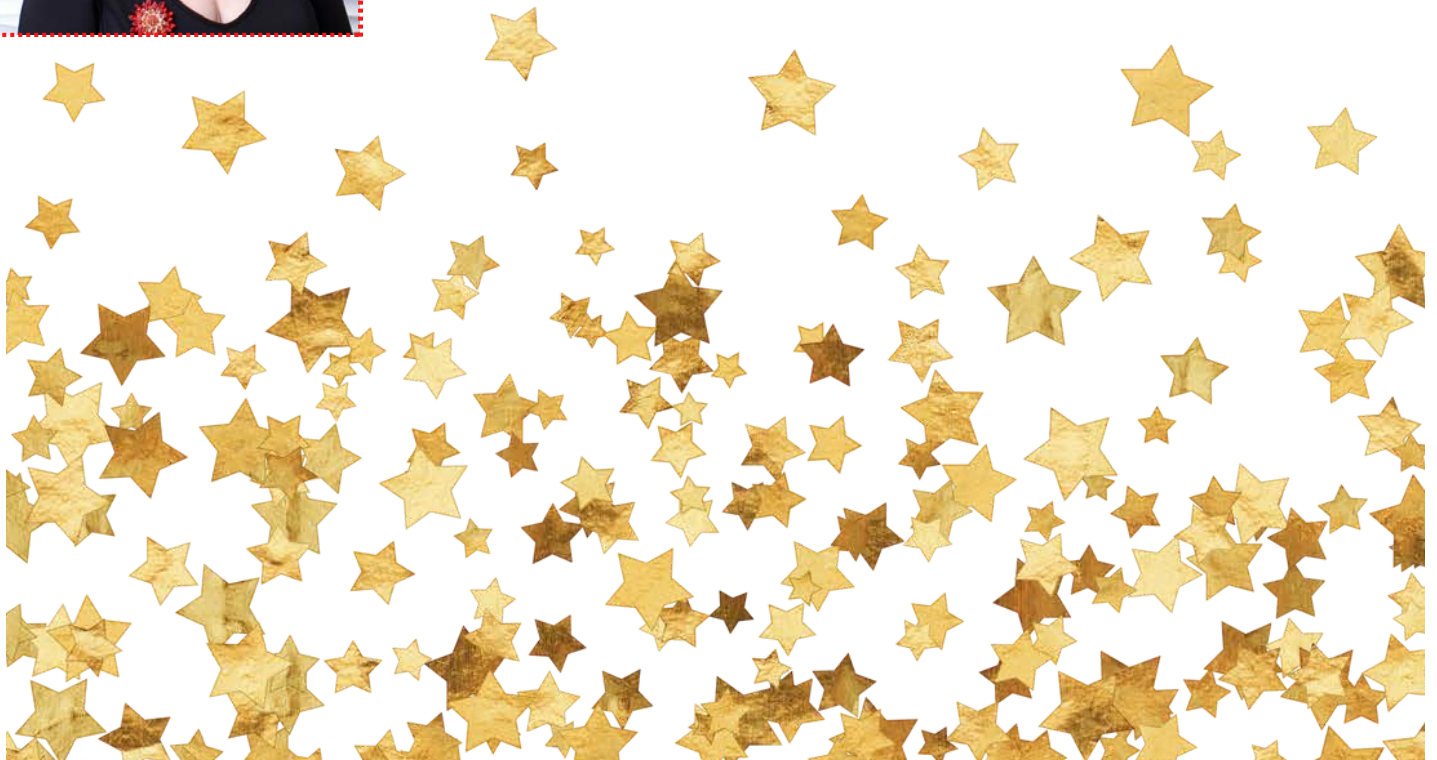
Speaking of the IC Challenge, get ready! The 2025 IC Convention will take place in Cary, North Carolina, and the challenge details will be announced during February's Leadership Conference, with registration opening soon after.

Aphrodite Hudson



Now, let's talk about something super fun—**Bunco**! Have you ever played this exciting dice game? It's a blast and a perfect way to raise funds for St. Jude. Headquarters has all the resources you need to host a Bunco fundraiser. Gather your chapter members, invite your neighbors, friends, and co-workers, and enjoy a night of fun and fundraising for an amazing cause. Plus, it's a great opportunity to share all about ESA with your guests!

For more information on hosting a Bunco night for St. Jude, reach out to headquarters at esaforstjude@epsilonsigmaalpha.org. Let's roll those dice for St. Jude!





ESA Foundation Jenni Russ



Hello!

I enjoyed seeing many of you at Fall Conference in Roanoke. Many thanks to those who supported the Blind Date with a Book Fundraiser. We raised \$60 for the Indiana ESA/Judy and Morton Lester Endowed Scholarship. I've already started gathering books to do it again at Spring Conference, including mysteries and action novels, which some of you mentioned enjoying.

Some reminders as we approach the end of the year, the holiday giving season, and the ESAF Scholarship deadline:

- ESAF dues must be paid by December 31. Pay online in MemberSuite: <https://esa.users.membersuite.com/profile>
- Scholarship applications are due January 31, 2025. Please share this link with students in your life, whether high school seniors or current undergraduate or graduate students. <https://www.epsilonsigmaalpha.org/scholarships>
- As the holidays approach, remember that the ESAF Pathways Program is a great way to honor anyone! <https://www.epsilonsigmaalpha.org/about/ESA-Foundation/contribute/Pathway>.



Easterseals Coordinator Brandy Small

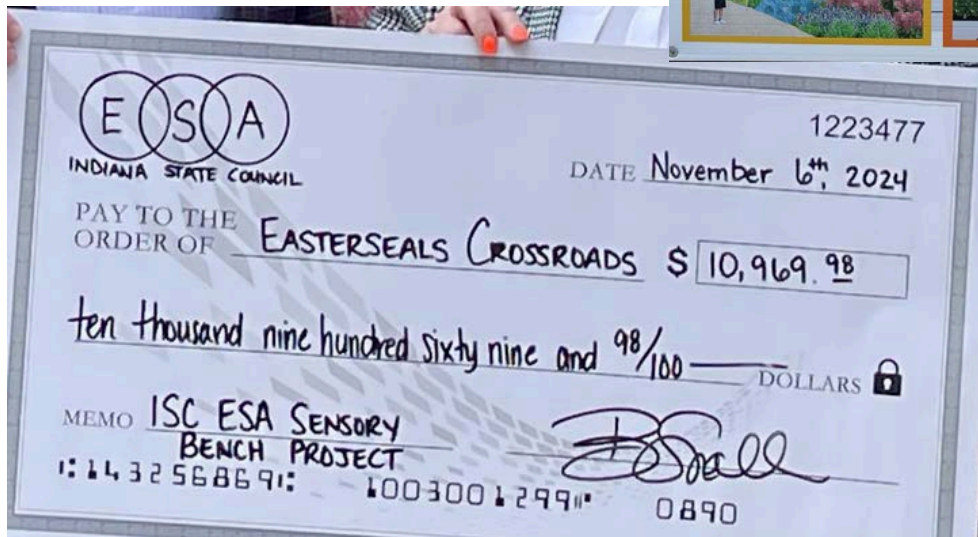


With great joy, I am happy to announce that our state project, Purse Bingo for Easterseals Crossroads Sensory Bench was a great success! We raised an amazing total of \$10,969.98 towards our goal!

Without the help and encouragement of each chapter, this event would not have had the large impact it did!

To everyone who volunteered, donated, sponsored and encouraged along the way, the words THANK YOU are not enough! You are truly incredible! I am honored to be the one chosen to lead this project, and extremely proud of the good works, good times all of us as good friends have accomplished...TOGETHER!

-Brandy Small





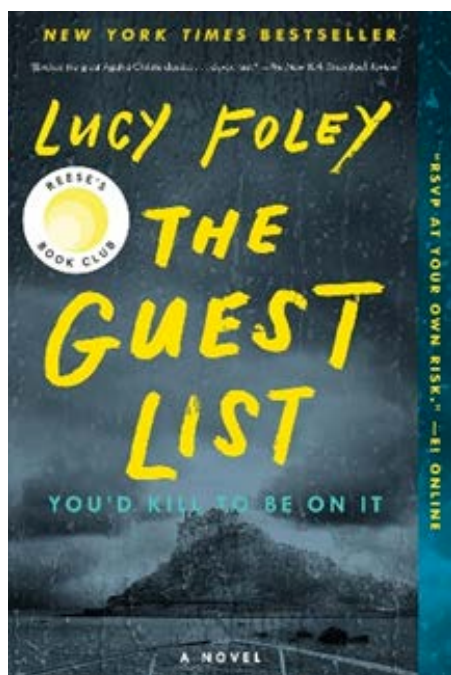
Alpha Delta, Pleasant Township

Hey, Indiana ESA!

We hope you've been Sparkling and Shining with the best of them and your holidays are filled with love, joy, and happiness. We would like to take this opportunity to thank those who donated crayons for the Bearing Precious Seeds Project we have been working on. It's greatly appreciated and helps us reach our goal for the children.

As we round out the year, we celebrated our 5th birthday in September. It's hard to believe how quickly the time has passed. We have learned about National Literacy Month and have been participating in our chapter Book Club. The current book is called The Guest List by Lucy Foley. If you or your book club have any recommendations for future reading, please feel free to reach out to me via phone, email or DM on Facebook.

Please Stay Positive and be Happy!
President Libby



Alpha Zeta, Fort Wayne

Alpha Zeta was happy to host the Fall Conference at the American Legion in Roanoke. It was a great day as Kary and her board conducted the meeting. "Leave a Little Sparkle Wherever You Go" was a fun theme to work with. Glitter was scattered all over the tables and members wore lots of "bling" for the day!!

If you are a small chapter, you should give it a try!! Alpha Zeta chapter prepared and donated food - good homemade soups, homemade salad and desserts. It is a good way to make a little money, even after splitting it with the state board.

Alpha Zeta will again be adopting a military family for Christmas. Each of us purchases toys and clothes for family members and we usually include a gift card to a supermarket as well. Then we get together one evening and wrap the gifts which is a fun time. And of course, they are delivered to the family in time for Christmas.

Wishing all of our ESA sisters a Happy Thanksgiving and a Joyous Christmas.





Beta Phi, Rockville

I hope everyone enjoyed the great fall weather.

Parke County just recently hosted the 10 days of the Covered Bridge Festival and they always estimate that close to a million people pass through the small rural county. The crowds were fantastic this year and I heard many good things from tourists about the vendors, all the small towns and just how much they enjoyed their time every day.

Now with November approaching, Beta Phi is planning our annual Thanksgiving Dinner fundraiser. Thanks to the Rockville Elks Lodge for once again letting us use their building for this great event. We serve many people with dine in, carry out or delivery.

On December 4 we will have our chapter's Christmas get together to enjoy dinner, games and gifts. We will also be drawing and announcing the name of our winner of the Vera Bradley raffle.

I close with wishing everyone a Happy Thanksgiving, a Merry Christmas and a joyous New Year.

Until next time . . .

-Patti Crafton

Chi Omicron, Avon

Chapter Highlights: Service, Creativity, and Community

Our chapter has been busy this season, giving back to the community and fostering sisterhood through meaningful activities. Recently, two of our members volunteered at the Shepherd Community Center's food pantry, lending their hands and hearts to help those in need. This service project was a wonderful reminder of the power of unity and the impact we can have on our community.

We also gathered for a fun fall craft event, where our creativity came to life. Not only did we create beautiful seasonal crafts, but we were also able to donate a portion of the proceeds to St. Jude Children's Research Hospital, supporting their life-saving work.

Looking ahead, we're excited for our annual Friendsgiving celebration, a cherished tradition that brings us together in gratitude and sisterhood. Additionally, at an upcoming craft fair, we'll be sharing a little bit about ESA and selling snacks, with proceeds going to our philanthropy efforts.

This season has been full of meaningful moments, and we are proud to continue living out our values of service, friendship, and philanthropy.

--Kim Hockaday



Eta Pi, Fishers

Hello, Indiana ESA!

We hope you had a wonderful fall and are getting ready for the holidays! Eta Pi has been keeping busy with our 13th Annual Golf Outing Benefiting St. Jude Children's Research Hospital! We had a beautiful September day for the outing, and we and our golfers had a great time. We have also volunteered with the Hear Indiana Run for Sound, Conner Prairie's Headless Horseman Festival (our favorite spooky fall event!), and more.

Our chapter members Kary, Alley, Jaclyn, and Laura attended MARC Conference in St. Louis and had a wonderful time. We held a recruitment scavenger hunt at Castleton Square Mall led by our Vice President and Membership Chair, Monica, which was so creative and a lot of fun!

We hope you have a wonderful holiday season!

ESA Love, Eta Pi





Gamma Pi, Indianapolis

We are grateful for the time we spent together gathering for social, membership, and philanthropic events.

- We welcomed a transfer, and have one potential pledge and one potential reinstatement spending time with us.
- September was packed with adventures at the Fall Conference and Hunter's Honey Bee farm.
- In October, we participated in the state Easterseals Purse Bingo fundraising project, hosted a chili cook-off for St. Jude, had members participate in the annual MARC conference, and explored Harvest Nights at Newfields.
- In November, several members visited the Museum of Miniature Houses in Carmel and enjoyed lunch together afterward.
- Through mid-December, we are collecting winter warm-wear and personal care items for veterans receiving support from Helping Veterans and Families (HVAF). Jenni Russ and Jan Rahn are traveling to Memphis for the Memphis Marathon weekend, where Jan will walk the 5K and Jenni will walk the 10K as St. Jude Heroes. Looking forward to the holiday season, our social committee is planning a celebration, and we are shopping for gifts for families and teens in need.

WINTER WARMUP FOR HOMELESS & AT-RISK VETERANS	
NOVEMBER 11- DECEMBER 8	
A PROJECT OF THE GAMMA PI CHAPTER OF EPSILON SIGMA	
DONATIONS BENEFIT HOOSIER VETERANS AND FAMILIES (HVAF)	DONATION NEEDS CLOTHING (MENS, ALL SIZES) - SOCKS - WHITE UNDERSHIRTS - BOXER BRIEFS PERSONAL CARE ITEMS - TOOTHBRUSHES & PASTE - DENTURE CARE - DEODORANT - SHAMPOO - SHAVING SUPPLIES - TRAVEL SIZED LOTION - FEMININE HYGIENE (PADS & TAMPONS)
DROP-OFF LOCATIONS GREAT LAKES ACE HARDWARE OF ZIONSVILLE HUSSEY-MAYFIELD ZIONSVILLE PUBLIC LIBRARY	





Past Indiana Presidents (PIPS)



As I mentioned in the last article, the PIPs remain very active. A large number of us attended the MARC conference in St. Louis on Oct. 11 and 12. Most of the PIPs know ESA members from other states by serving as state presidents at the same time and attending leadership, serving on I.C. or MARC boards or committees, or just by attending MARC Conferences and International Conventions.

A perk of being a member of an International organization like ESA is getting to know people from other states and sharing ideas with them.

One of the workshops was on Tai Chi – Moving for Better Balance. These Tai Chi exercises are geared toward maintaining and achieving better balance. This appealed to me because I am older and falls are a big issue with us “older folks”. I hope more of you will attend MARC the next time. We ride together and share rooms so that cuts the expense somewhat!

The PIPs get together during the holidays, We always enjoy spending time together. Hope that all of you have a wonderful Thanksgiving and a Joyful Christmas.

-Gloria Wilson

Types of ESA Membership

Community Membership Open to anyone ages 18 and older.	Collegiate Membership Open to anyone ages 18 and over and enrolled at a university or college
Legacy Membership Close relatives of currently active ESA members may join at a reduced rate.	Elan Membership For members under the age of 18, under guidance of a community member.

Epsilon Sigma Alpha International, Inc
ISC 2024 Fall Conference Final Financial Statement

Date Report Submitted	9/26/2024 14:15
What Conference & year hosted	Fall 2024
Chapter Name, City, and Number	Alpha Zeta, Fort Wayne, 5497
Chapter President	Dawn Williams
Submitted By	Kim Turrin
Date of Conference	9/21/2024
Total number of registrations and registration fee	50 @ \$20
Income	
Total income from registration	\$1,000
Total number of ways & means tables and ways & means table fee	10 @ \$2
Total income from ways & means tables	\$20
Expenses	
Expenses from serving breakfast	\$37.38
Lunch expenses	\$107.75
Printing expenses	\$20
Building rental expenses	\$150
Refunds that had to be provided	\$0
Other expenses	\$0
Total expenses	\$315.13
Total Income Value	\$1,020
Total Expenses Value	\$315.13
Net Profit Value	\$704.87
Half to Host Chapter Value	\$352.43
Half to Indiana State Council Value	\$352.44



**2024 Purse Bingo for Easterseals
Sponsored by the Indiana State Council of ESA**

INCOME

Sponsors		\$2055.00
Ticket Sale	261 @\$30	\$7830.00
50/50 #1	1505 @\$1	\$1505.00
50/50 #2	912 @ \$1	\$ 912.00
Raffle Baskets	17 @ \$1	\$1962.00
Extra Card sales	94 @ \$5	\$ 470.00
Purse Raffle	222 @ \$2	\$ 444.00
TOTAL INCOME		\$15,178.00

EXPENSES

License	\$ 50.00
Rent & Ins for Facility	\$ 769.00
Purses	\$1796.97
50/50 #1	\$ 753.00
50/50 #2	\$ 456.00
Bingo Sheets	\$ 163.00
Misc (table cover and daubers)	\$ 220.05
TOTAL EXPENSES	\$4208.02

TOTAL PROFIT	\$10,969.98
--------------	-------------

TOTAL DONATED TO EASTERSEALS	\$10,969.98
------------------------------	-------------

2025 Spring Conference

Gamma Pi invites you to celebrate being

LUCKY IN ESA at Spring Conference

Saturday, March 15, 2025

9 a.m. Registration and Shopping

10 a.m. Meeting

Little Flower School, Indianapolis



*Watch your inbox and
the Indiana ESA website
for details coming soon!*





ACOLF News



ACOLF Rock the Night - Dec 7:

Anna's Celebration of Life Foundation will be holding their Rock the Night for Special Needs fundraising event on Saturday, December 7 at the Atrium in Indianapolis.

ESA members serve as volunteers for this event every year. If you are interested in volunteering this year, a direct link is available on our state website's home page or you can contact Pam Vogel directly at esapamv@yahoo.com or text 812-371-2719 and she will get you signed up to volunteer.

ACOLF Rockin Raffle Tickets !!

Hello ESA! Quick reminder that you or your chapter can still purchase a raffle ticket for the Rockin' Raffle for ACOLF! Let Brandy Small know if you are interested! Will need money by 12/7 (day of drawing).

(\$100 would go towards the chapters year end donation total)

\$100 each for a chance at \$10,000!!!!





Traditional Chapters

Avon, Chi Omicron
 Avon, Gamma Tau
 Danville, Zeta Eta
 Evansville, Delta Sigma
 Fishers, Eta Pi
 Fort Wayne., Alpha Zeta
 Franklin, Delta Kappa
 Huntington, Beta Chi
 Indianapolis, Gamma Pi

Lafayette, Lambda Mu
 North Manchester, Epsilon Sigma
 Plainfield, Omega Chi
 Pleasant Township, Alpha Delta
 Rockville, Beta Phi
 Seymour, Beta Kappa
 Seymour, Delta Delta
 Speedway, Gamma Omicron
 Terra Haute, Delta Zeta

Collegiate Chapters

Ball State University (Muncie), Phi Alpha

2024 - 2024 Indiana State Council Board



Office	Name
President	Kary Soto
1st Vice President	Jennifer Morris
2nd Vice President	Pam Vogel
Treasurer	Jennyfer Balkema
Association of the Arts	Monica Haddock
Awards	Sue Bigler
Chaplain	Elaine Chaney
Collegiate Coordinator	Maddie Kerr
Corresponding Secretary	Alley Gary
EasterSeals Coordinator	Brandy Small
Educational	Makayla Greeson
Foundation Chair	Jenni Russ
Jr St Jude Coordinator	Aphrodite Hudson
Jr. Past President	Cindy Norman
Lamp Editor	Mary Brewer
MARC Representative	Susan Waltz
MARC Representative	Vivivan Greeson
Parliamentarian	Laura Campbell
Recording Secretary	Amanda Zahorsky
Scrapbook	Jaclyn Thomas
Sr St Jude Coordinator	Megan Gray
Webmaster	Courtney Ginder



Mary Brewer - Editor
7732 Connie Drive
Indianapolis, IN 46237



Dates to Remember

January 1, 2025	Nomination Forms for State Offices due
January 1, 2025	Forms to host a State Conference due
January 1, 2025	Recommendations for State Projects due
January 1, 2025	Proposals to Constitution, By-Laws, and Standing Rules due
January 1, 2025	State dues are due
February 1, 2025	LAMP articles due
February 8, 2025	ISC Board Meeting
March 15, 2025	Spring Conference (Indianapolis)
April 1, 2025	LAMP articles due
June 20-22, 2025	State Convention (Indianapolis)
